

**Safety Guidelines:** Stop the vehicle in a safe location or have a passenger use the system. Safely operate the vehicle, obey all laws and regulations, and use good judgment at all times. Note: User assumes sole responsibility for and all risk in using this system. General Guidelines: Install the device in a non-obstructive, safe location within the vehicle cab. Avoid obstructing the following: Vehicle operation, Visibility through windows, Safe entry or exit, Safety devices such as air bags. Firmly secure the device to stay in place despite vibrations, shocks bumps, or vehicle accidents. Do not use this system or any computer system while operating a motor vehicle. Mob Armor is not responsible or liable for personal and or property damage.

**What does your 100% Satisfaction Guarantee mean?**

Our 100% Satisfaction Guarantee means we guarantee you will be satisfied with your Mob Armor Product, or we will refund your money. If you are unsatisfied with your product at any time within 30 days of your purchase, you can return it to us for a full refund, no questions asked. You pay shipping back to us. We do not refund any shipping cost.

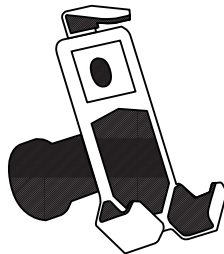
**What warranty does Mob Armor offer?**

The Mob Armor Warranty covers all defects in workmanship or materials of our products for up to one year. This warranty applies only to the original purchaser at retail and may not be transferred. This warranty only covers defects arising under normal usage and does not cover any malfunction, damage or failure due to accident, misuse, abuse, neglect, alteration, modification or repair by other than an authorized service center for Mob Armor products. Scratching of the powder-coated surface, anodizing or plastic constitutes normal wear and is not covered under warranty.

PN: 6213 REV 11/18



**MOB ARMOR™**  
**RUGGEDIZED MOBILE TECHNOLOGY**

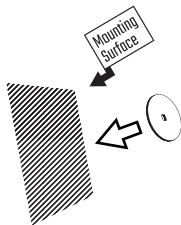


**INSTRUCTIONS FOR**  
**MOB MOUNT SWITCH MAGNETIC**



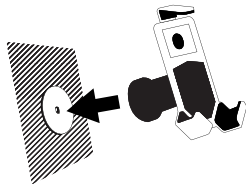
**MOB ARMOR™**  
RUGGEDIZED MOBILE TECHNOLOGY

## INSTRUCTIONS FOR MOB MOUNT SWITCH MAGNETIC



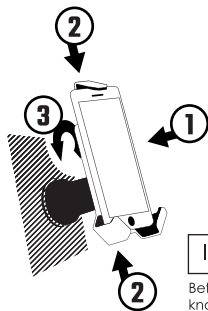
Attach disc to mounting surface

Prep the area that you would like to adhere the disc to with included alcohol wipe. While the surface is drying remove the red plastic from the disc. Then press the adhesive onto mounting surface firmly for 30 seconds.



Attach mount to disc

Attach the magnetic end of your Mob Mount Switch to the steel plate that you have just installed.



Insert phone into mount

Before you start this step, loosen the thumb knob to free the slide.

- 1 Then place your phone in your Mob Mount.
- 2 Next squeeze the slide onto the phone.
- 3 Finally, tighten the knob to secure your phone.

**Warning:** Improper installation of phone may cause mount failure under shock and vibration. The tighter you clamp the phone in the Mob Mount arms the more securely it will hold the phone.

**Note:** If using the Mob Mount Switch Magnetic in an open cab vehicle or MOTORCYCLE, it is required to use the included lanyard as a safety precaution. Safety lanyard use is required to meet warranty and product use guidelines.

**Using the lanyard:** Loop lanyard end around a fixed location and clip the lanyard to itself. Pull both ends to ensure the lanyard is properly installed and does not move or slip off the vehicle.

**TEMPERATURE NOTE:** VHB adheres best at room temperature (75°F/24°C). In outdoor temperatures above 90°F, remove mount while not in use to prevent VHB mount disc from pulling off dash due to weight of mount.

### WARRANTY

For assistance, please contact us directly at:  
MOB ARMOR  
[www.mobarmor.com](http://www.mobarmor.com)  
2360 Thompson Way Suite D & E, Santa Maria, CA 93455  
Customer Service: (805) 214-1815

**WARNING:** This product contains powerful magnet(s). Not for use around individuals with pacemakers.